

# *New Mounting Accessories*



**Traditional Cylinder Attachments**



**Alignment Aids**



**Corrosion Resistant Attachments**



## *Dual Axis Knuckle – for Style BB Cylinders*

The Dual Axis Knuckle increases angular movement – from the cylinder center line.

- Increased angular movement range compared to spherical bearing mount.
- Significantly higher dynamic load rating than spherical bearing mount.
- Reduced bearing loads and wear that results from misalignment.
- Allows faster assembly of pivoting cylinders to the machine.
- Available in six pin diameters from .50” through 2.00”
- Material is powder coated steel.

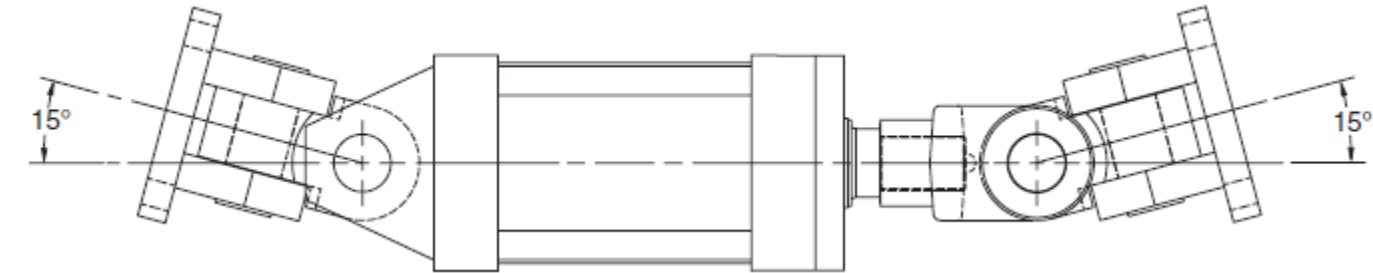


# Dual Axis Knuckle – for Style BB Cylinders

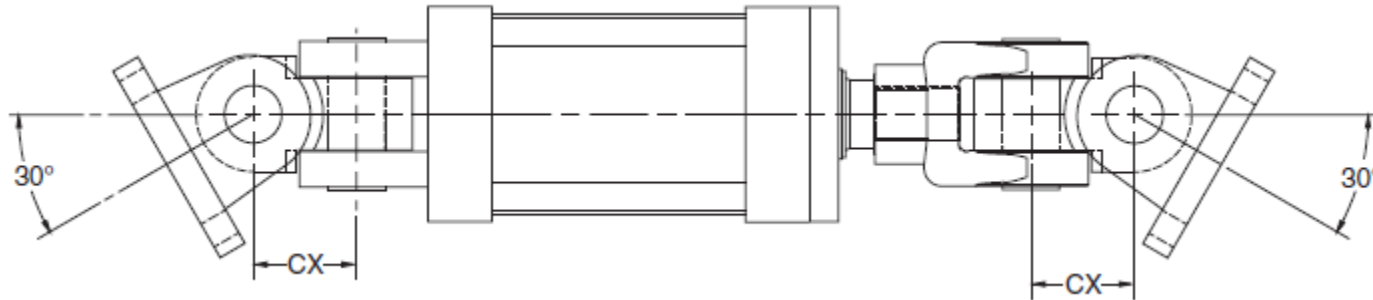


## Maximum Achievable Angular Movement from Cylinder Centerline

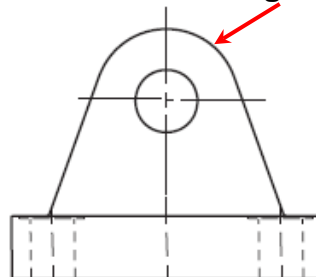
**Inboard pin** – 15° maximum movement for cylinder misalignment only.



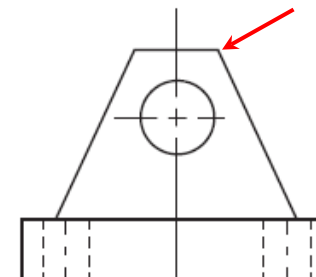
**Outboard pin** – 30° maximum movement when applying force to a load moving in a curved plane.



**Cast Clevis Bracket with Radius on lug**



**Fabricated Steel Clevis Bracket with Corners on lug**



**Maximum movement is achieved with cast clevis brackets. Movement is reduced with fabricated clevis brackets.**



# Forged & Cast Clevis Brackets and Eye Brackets

New Forged Steel and Cast Ductile Iron Clevis Brackets and Eye Brackets have Higher Load Ratings than Traditional Fabricated Steel Construction

- Load ratings meet or exceed the maximum force generated by heavy duty industrial hydraulic cylinders.
- Some cast ratings are more than **TWO TIMES** the fabricated ratings!

Pin Ø	Load Capacity (lb)			
	Clevis Bracket		Eye Bracket	
	Cast	Fabricated	Cast	Fabricated
0.50	7740	7300	4620	4100
0.75	13600	10880	12370	10500
1.00	23000	15180	20450	20400
1.38	39500	23560	33500	21200
1.75	49480	21520	49480	43300
2.00	72400	26000	70100	70000
2.50	98700	28710	98200	94200
3.00	123300	28190	121940	121900
3.50	200400	80250	187910	57400
4.00	292100	98420	268000	75000

# Cast Clevis Brackets and Eye Brackets

How to choose between cast and fabricated brackets.

Eye Bracket / Clevis Bracket Feature	Material	
	Forged Steel or Cast Ductile Iron	Fabricated Steel
Load Rating	Meets or exceeds maximum force generated by heavy duty industrial hydraulic cylinders!	Unchanged from previous catalogs. Lower than cast iron in most sizes.
	See part number pages for details	
Mounting Method	Attach with threaded fasteners - Forged Steel may be welded	Attach with threaded fasteners or weld to machine
Dual Axis Knuckle Compatibility	Recommended - Allows maximum swing arc	Not recommended - Reduced swing arc
Value	Best economy with higher load ratings and high volume production	Good economy with weld-in-place mounting
Standardized Mounting	ANSI/(NFPA) T3.6.8 R3-2010	ANSI/(NFPA) T3.6.8 R1-1984

- Cast Clevis Brackets and Eye Brackets have new part numbers.
- Cast brackets must not be welded in place.
- The bottom of bracket bases have letter P cast-in to identify as Parker.
- Cast Brackets have powder coat surface treatment.

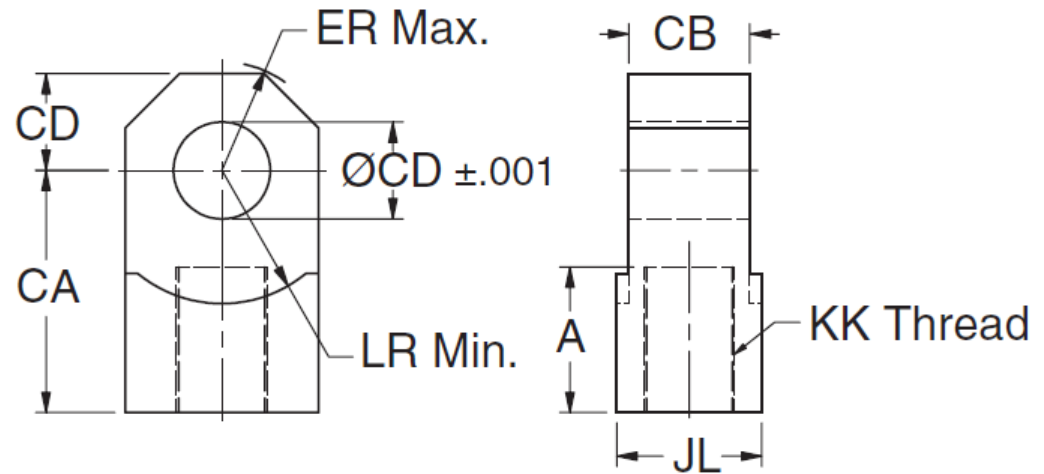
# Revised Knuckle Profile

- Design revised for 1 7/8-12 thread and larger. New part numbers assigned.

- Base of Knuckle is wider to increase thread wall.

- Swing arc remains unaffected when used with cast or fabricated clevis bracket.

- Legacy knuckle without wider base is available for order.



## Thread Size 1 7/8-12 & Larger

KK Thread	Part Number	CB	JL
1 7/8-12	0962160000	2.50	3.00
2 1/4-12	0962170000	3.00	3.50
2 1/2-12	0962180000	3.00	4.00
2 3/4-12	0962190000	3.50	4.00
3 1/4-12	0962200000	4.00	6.00
3 1/2-12	0962210000	4.00	6.00
4-12	0962220000	4.50	6.00

# New Mounting Accessory Price List

A new Forged & Cast Bracket price page shows mating accessory part numbers and cylinder bore sizes.

## Mounting Accessories

Series 2A, 2AN, 2H, 2HD, 3H, 3HD, 3L, MA, MAN, MH AND VH  
 Distributor discount code "A"

### Cast Iron Eye Bracket and Clevis Bracket Mounting Accessories

with mating Pivot Pin, Rod Clevis and Knuckle

1) **Order Entry Note:** Mounting Accessory part numbers on this page must be in a 10 digit format for mainframe entry. If the number is listed as 5 digits, add a zero in front of the number and four zeros to the end of the number.

**Example:** 68368 becomes 0683680000

If the number is listed as 6 digits, add four zeros to the end of the number.

**Example:** 133286 becomes 1332860000

2) Order by part number. If price is not shown consult factory.

3) Mating clevis brackets, eye brackets or pivot pins are listed opposite the rod clevis or knuckle they fit.

4) Select rod clevis or knuckle by thread size to suit cylinder piston rod end thread.

5) Pivot pins are supplied as standard on mounting styles BB or BC cylinders. Pivot pins must be ordered as separate items if used with rod clevis or knuckle.

Thread Size	Rod Clevis		Cast Iron Eye Bracket				Knuckle		Cast Iron Clevis Bracket				
			Pivot Pin		Price	Pivot Pin			Price				
			With Retaining Rings	With Cotter Pins		With Retaining Rings				With Cotter Pins			
Part No.	Price	Part No.	Price	Part No.	Part No.	Part No.	Price	Part No.	Price	Part No.	Part No.		

# *New Mounting Accessory Price List*

The former Fabricated Steel Clevis Bracket price page remains. Note that Eye Brackets are only available as forged steel or cast ductile iron.

## **Mounting Accessories**

Series 2A, 2AN, 2H, 2HD, 3H, 3HD, 3L, MA, MAN, MH, and VH

Distributor discount code "A"

### **Fabricated Clevis Bracket Mounting Accessories**

with mating Pivot Pin and Knuckle

1) **Order Entry Note:** Mounting accessory part numbers on this page must be in a 10digit format for mainframe entry. If the number is listed as 5 digits, add a zero in front of the number and four zeros to the end of the number.

**Example: 68368 becomes 0683680000**

2) Order by part number. If price is not shown consult factory.

3) Mating clevis brackets, eye brackets or pivot pins are listed opposite the rod clevis or knuckle they fit.

4) Select rod clevis or knuckle by thread size to suit cylinder piston rod end thread.

5) Pivot pins are supplied as standard on mounting style BB cylinders. Pivot pins must be ordered as separate items if used with rod clevis or knuckle.


Thread Size	Knuckle		Fabricated Steel Clevis Bracket		Pivot Pin		Price
					With Retain- ing Rings	With Cotter Pins	
	Part No.	Price	Part No.	Price	Part No.	Part No.	





# Mounting Accessory Catalog

- One catalog with all mounting accessories.
  - ✓ Inch Cast and Fabricated
  - ✓ Dual Axis Knuckle
  - ✓ Alignment Coupler
  - ✓ Split Flange Coupler
  - ✓ Metric
  - ✓ Stainless Steel



**Cylinder Mounting Accessories**  
Catalog HY08-1300-1/NA

aerospace  
climate control  
electromechanical  
filtration  
fluid & gas handling  
hydraulics  
pneumatics  
process control  
sealing & shielding

**Parker**

ENGINEERING YOUR SUCCESS.

# Mounting Accessory Catalog

Forged Steel or Cast Accessory Brackets Now Listed with Mating Parts

Thread Size	Pin Ø	Rod Clevis		Mounting Plate or Eye Bracket		Pivot Pin	
		Part Number	Load Capacity (lb)	Forged Steel or Cast Ductile Iron		Part Number	Shear Capacity (lb)
				Part Number	Load Capacity (lb)		
5/16-24	0.312	0512210000 <sup>1</sup>	2600	0959810031	1850	-	-
7/16-20	0.500	0509400000	4250	0959810050 <sup>2</sup>	4620	0683680000	8600
1/2-20	0.500	0509410000	4900	0959810050 <sup>2</sup>	4620	0683680000	8600
3/4-16	0.750	0509420000	11200	0959810075 <sup>2</sup>	12370	0683690000	19300
3/4-16	0.750	1332840000	11200	0959810075 <sup>2</sup>	12370	0683690000	19300

Thread Size	Pin Ø	Knuckle		Clevis Bracket				Pivot Pin	
		Part Number	Load Capacity (lb)	Forged Steel or Cast Ductile Iron		Fabricated Steel		Part Number	Shear Capacity (lb)
				Part Number	Load Capacity (lb)	Part Number	Load Capacity (lb)		
5/16-24	0.438	0740750000	3300	0960160044	2830	0740760000	3600	0740780000	6600
7/16-20	0.500	0690890000	5000	0960160050	7740	0692050000	7300	0683680000	8600
1/2-20	0.500	0690900000	5700	0960160050	7740	0692050000	7300	0683680000	8600
3/4-16	0.750	0690910000	12100	0960160075	13600	0692060000	10880	0683690000	19300

Cast Accessory Brackets are added to each cylinder series catalog.

# *New Mounting Accessories*

**Parker**  
Thank You

**Traditional Cylinder Attachments**



**Alignment Aids**



**Corrosion Resistant Attachments**



ENGINEERING YOUR SUCCESS.